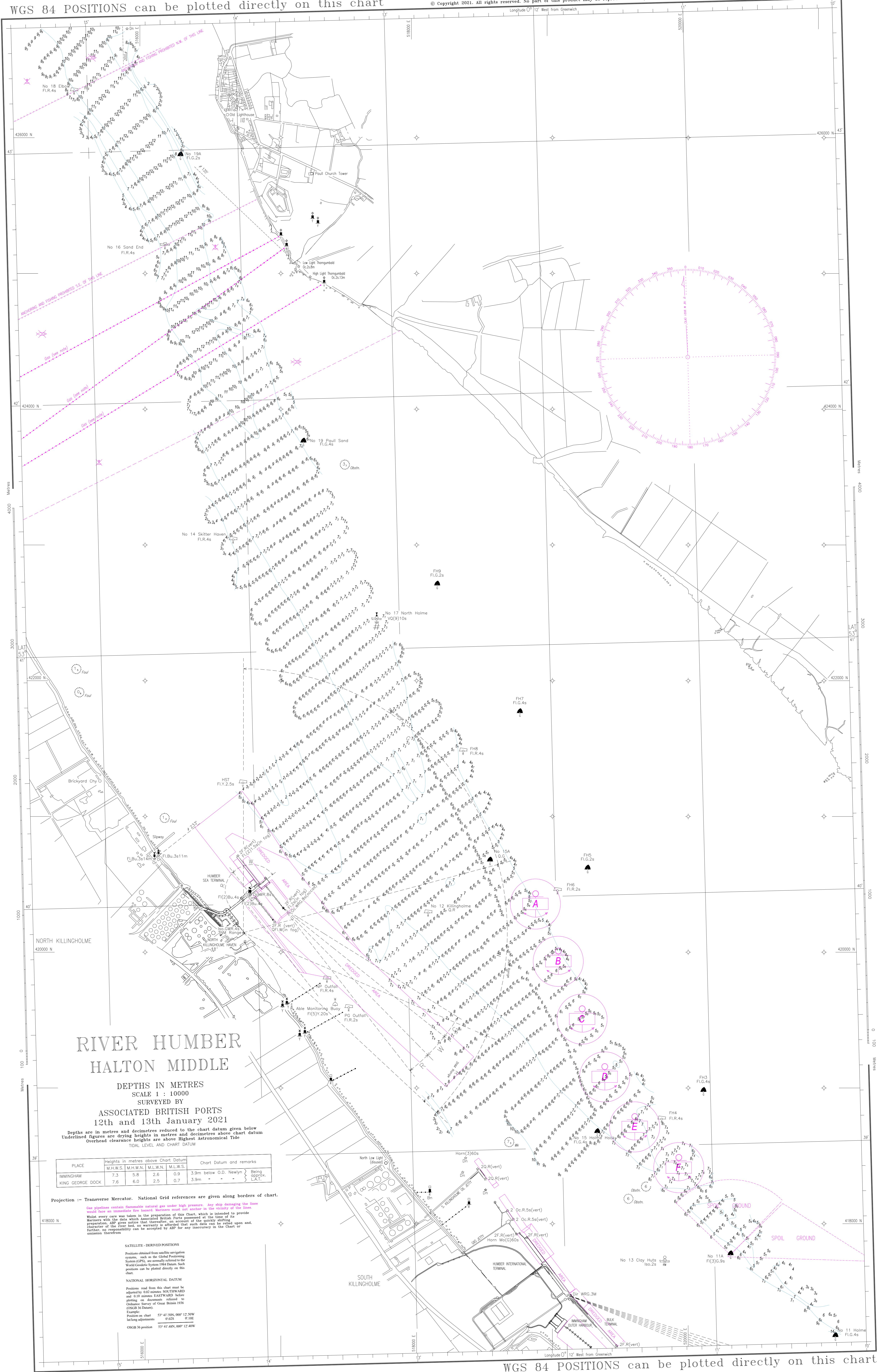


WGS 84 POSITIONS can be plotted directly on this chart

© Copyright 2021. All rights reserved. No part of this product may be reproduced in any form (including photocopying or by electronic means) without prior permission.



RIVER HUMBER HALTON MIDDLE

DEPTHS IN METRES
SCALE 1 : 10000
SURVEYED BY

ASSOCIATED BRITISH PORTS
12th and 13th January 2021

Depths are in metres and decimetres reduced to the chart datum given below
Underlined figures are drying heights in metres and decimetres above chart datum
Overhead clearance heights are above Highest Astronomical Tide
TIDAL LEVEL AND CHART DATUM

PLACE	Heights in metres above Chart Datum				Chart Datum and remarks
	M.H.W.S.	M.H.W.N.	M.L.W.N.	M.L.W.S.	
MINNINGHAM	7.3	5.8	2.6	0.9	3.9m below O.D. Newlyn 2 being approx. L.A.T.
KING GEORGE DOCK	7.6	6.0	2.5	0.7	3.9m " " " " " "

Projection - Transverse Mercator. National Grid references are given along borders of chart.

Gas pipelines contain flammable natural gas under high pressure. Any ship detaching the lines could cause an immediate fire hazard. Masters must stay onshore in the vicinity of the lines.
Whilst every care was taken in the preparation of this Chart, which is intended to provide Mariners with the data which associated British Ports possess at the time of its preparation, ABP gives notice that hereafter, an account of the quick shifting of the river bed in severity is afforded that such data can be relied upon and further, no responsibility can be accepted by ABP for any inaccuracy in the Chart or omission therefrom.

SATELLITE-DERIVED POSITIONS

Positions obtained from satellite navigation systems, such as the Global Positioning System (GPS), are usually referred to the World Geodetic System 1984 Datum. Such positions can be plotted directly on this chart.

NATIONAL HORIZONTAL DATUM

Positions read from this chart must be adjusted by 0.02 metres SOUTHWARD and 0.10 metres EASTWARD before plotting on documents referred to Ordinance Survey of Great Britain 1946 (OSGB 36 Datum).
Example:
Position on chart: 53°41'50.00" 12°50'
Lack of adjustment: 53°41'48.00" 12°50'
OSGB 36 position: 53°41'48.00" 12°50'

WGS 84 POSITIONS can be plotted directly on this chart